



**All-glass sliding wall**

**Freedom**

**Extensive view**

**Transparency**

# VG 17

- **An abundance of frameless glass**
- **Maximum transparency**
- **Weatherproof and windproof**
- **Easy to use**
- **All-glass corners**

The VG 17 lightweight all-glass sliding partition offers attractive transparency and design.

The individual glass panes run in a narrow trolley at the bottom and are simply guided by the ceiling profile at the top. - all with no additional frame. This sliding partition serves as protection against dust, wind and weather particularly for balcony and terrace glazing, as well as for indoor room dividers. Due to the wide range of configuration options available, maximum openings of transparent glass can be achieved even diagonally across corners.





### Easy to use

Both sides of the all-glass sliding panel can be easily moved independently from each other. The door slide mechanism is closed with plastic caps on each end.

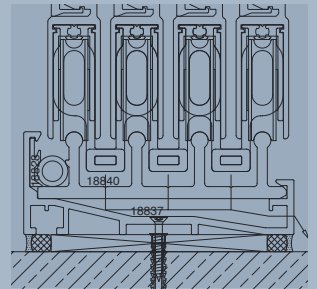


# VG 17

- Easy to use
- Expandable
- Invisible mounting

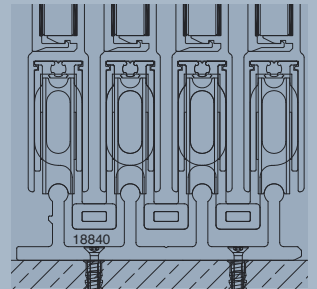
### Invisible mounting

The naturally anodised rail is screwed on and wedged in. The mounting onto the structure happens underneath and is invisible.

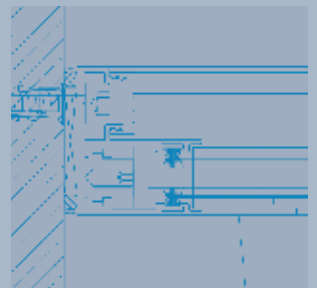


### Flat bottom rail

The rail can be installed directly onto the floor. Suitable for interiors.



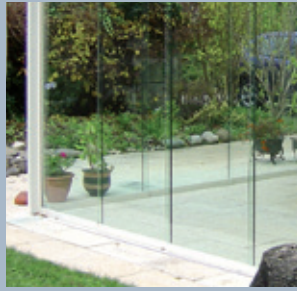
Laterally, the sliding wall runs in a U-shaped wall connection profile. The fastening is in the side mounting channel and is covered with a clip-on strip.





### Adaptable

The innermost and outermost leaves each have a height-adjustable roller for lateral tolerance compensation. For tolerances in the ceiling area, a compensation profile for the ceiling track is available as an option.



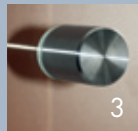
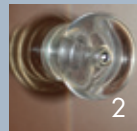
### Curtain wall safe

Curtain wall safety devices and stoppers are concealed in the ceiling rail. Adjacent elements are securely prevented from moving in the closed position by pins carried along during closing.



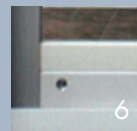
### Practical

A plastic (2) or stainless steel (1, 3) sliding handle can be fitted at operating height or a pressure cylinder (4) as an addition to the standard lock.

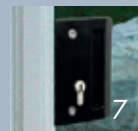


### Firmly lockable

The first opening leaf is normally opened with a knob (5). The cleaning fastening on the service leaf (6) can be opened with a screwdriver and provides access to the space between the panes.



A cylinder lock (7) is available as a variant fitted at operating height or a pressure cylinder (8) in the trolley at each pane extension.



- Adaptable
- Curtain wall safe
- Practical
- Firmly lockable



### Uniform design

Centre-opening systems are designed with an odd number of leaves so that the brush seal profile can also be fitted equally everywhere. Alternatively, systems with an even number of leaves are possible with push leaf in the middle.



# VG 17

- **Lightweight, thermally unseparated aluminium system**
- **Design: 2- , 3- , 4- , 5- or 6-track**
- **Glass thickness: 8mm or 10mm**
- **Wide range of variations and combinations**
- **Element seal: optional, with brush seal**
- **Leaf width: up to 1500mm max.**
- **System width: theoretically unlimited!**
- **Element height: up to 2600mm max.**
- **Weight per sliding panel: 70 kg max.**
- **Running surfaces always anodised in natural colour and abrasion-resistant**

### Safety glass

The glass is 8mm or 10mm single-pane safety glass, with ground, polished and faceted edges. A frosted glass effect can be achieved, on request, by means of etched glass.



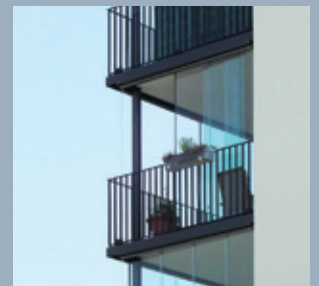
### Weatherproof

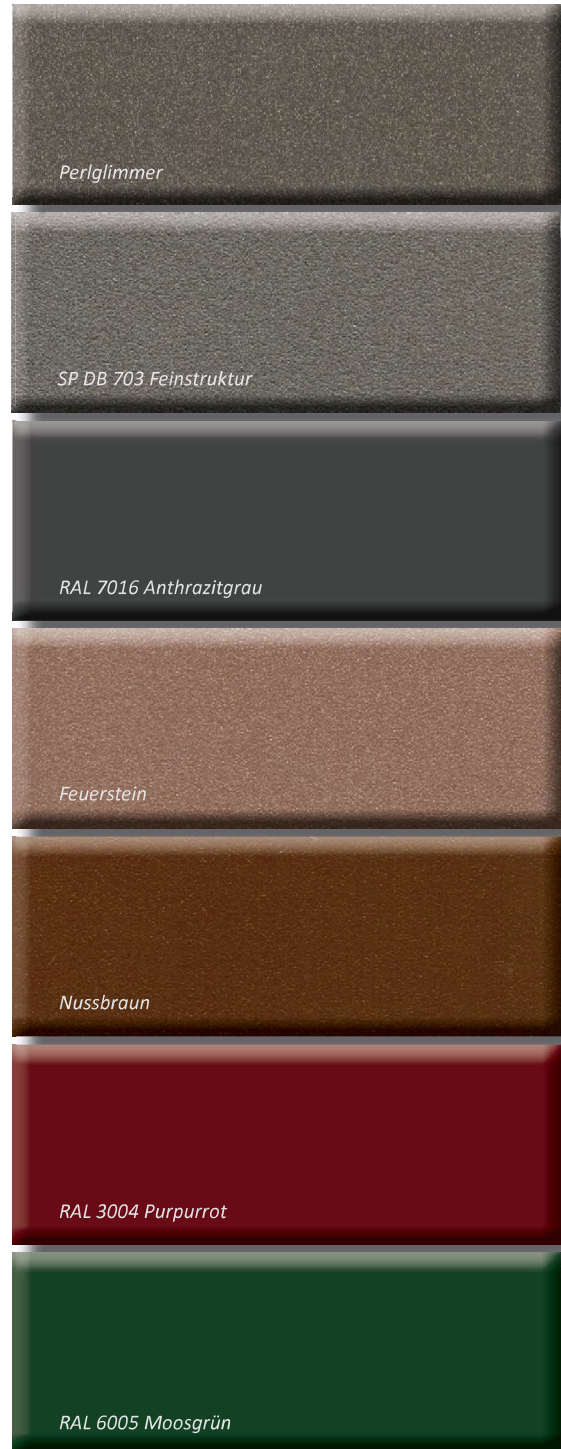
The bottom rail is sealed at the side by a cover. Additional profiles designed, on request, also to seal the space between the panes with brushes are included as standard.



### Open corners

At a 90° corner, the sliding partition can be designed with a free-standing or push-apart all-glass corner. In this case, the standard lock or a lock box over the corner can be used.





( Diese Muster dienen lediglich einer Orientierung, da unterschiedliche Bildschirmdarstellungen und Ausdrücke nicht den Original Farbtönen darstellen können.)

SUNPARADISE-Beschichtungen sind  zertifiziert